



Actualités Séno-Gynécologie

Le 14 octobre 2021

Domaine de la Tuilerie

Dr JONCOUR Anthony

Breast Cancer

Metastatic setting

DESTINY Breast03
(2nd line T-DXd HER2+)

KEYNOTE 355
(1st line Pembrolizumab TN)

MONALEESA 2
(1st line Ribociclib Luminal)

Neoadjuvant setting

BRIGHTNESS
(Carboplatine TNBC)

KEYNOTE 522
(Pembrolizumab TNBC)

Gynecological Cancers

EMPOWER

(2nd line Cemeplimab in metastatic cervical cancer)

KEYNOTE 826

(1st line Pembrolizumab in metastatic cervical cancer)

OReO-ENGOT-Ov38

(Olaparib retreatment in late recurrent ovarian cancer)

Breast Cancer

Metastatic setting

DESTINY Breast03
(2nd line T-DXd HER2+)

KEYNOTE 355
(1st line Pembrolizumab TN)

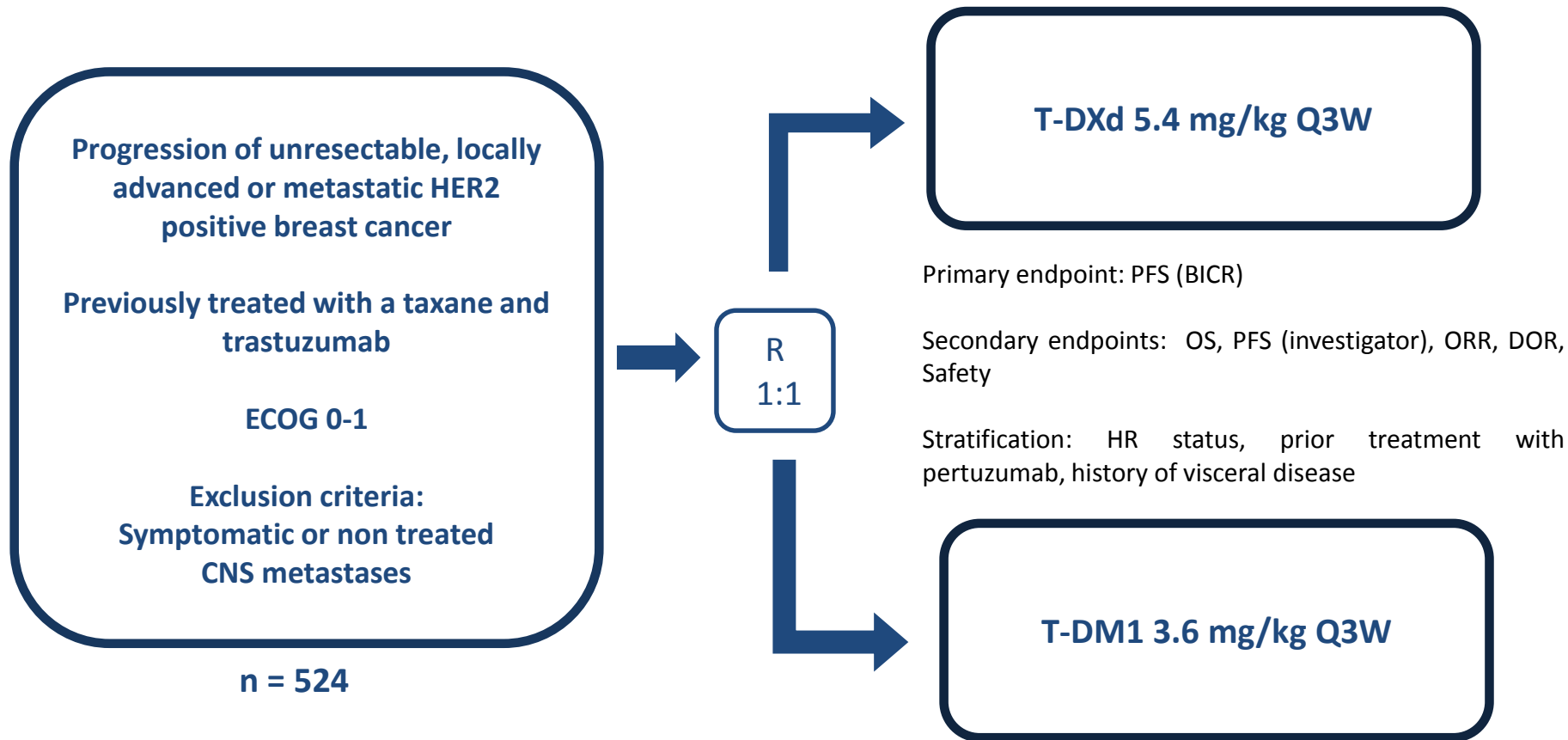
MONALEESA 2
(1st line Ribociclib Luminal)

Neoadjuvant setting

BRIGHTNESS
(Carboplatine TNBC)

KEYNOTE 522
(Pembrolizumab TNBC)

DESTINY Breast03: Phase III Trial



DESTINY Breast03: Baseline characteristics

HR expression \approx 50%

Brain metastases: 23.8% vs 19.8%

Median age: 54 years

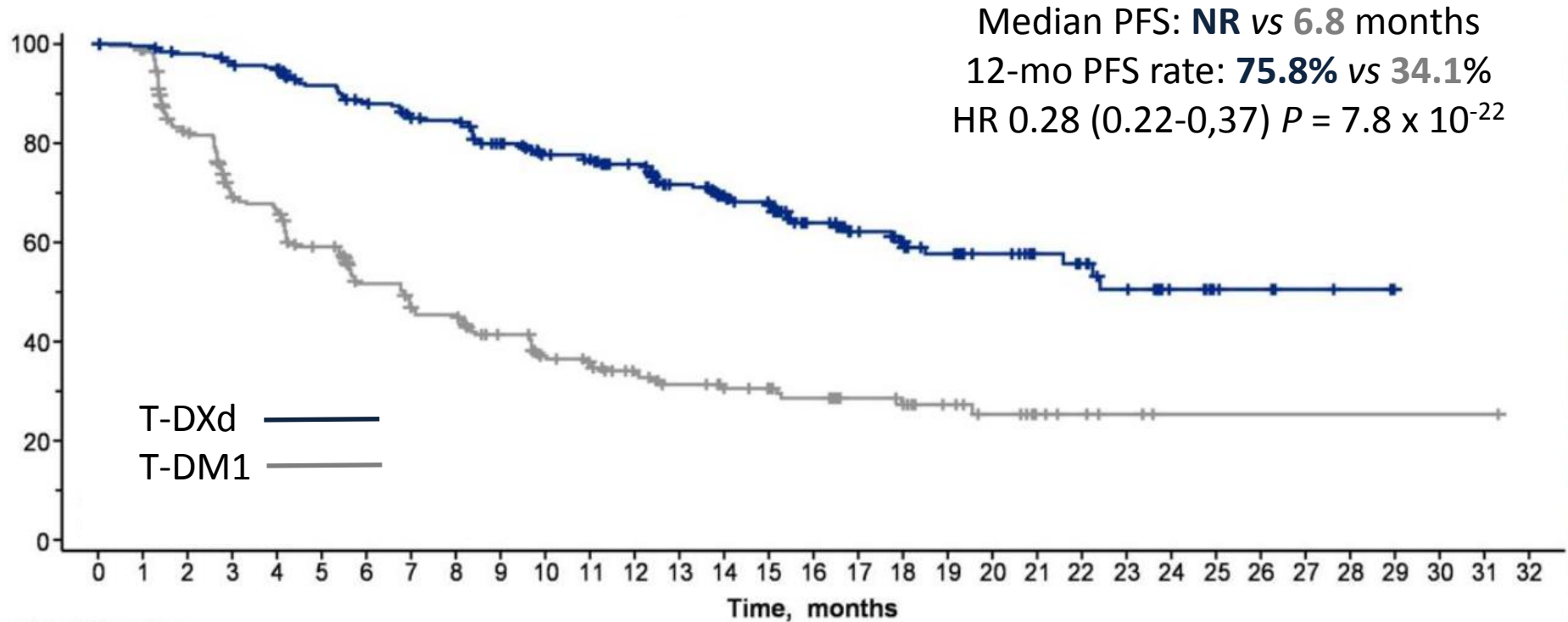
Only one previous therapy : 49%

2 previous therapies: 21.5 vs 24.7%

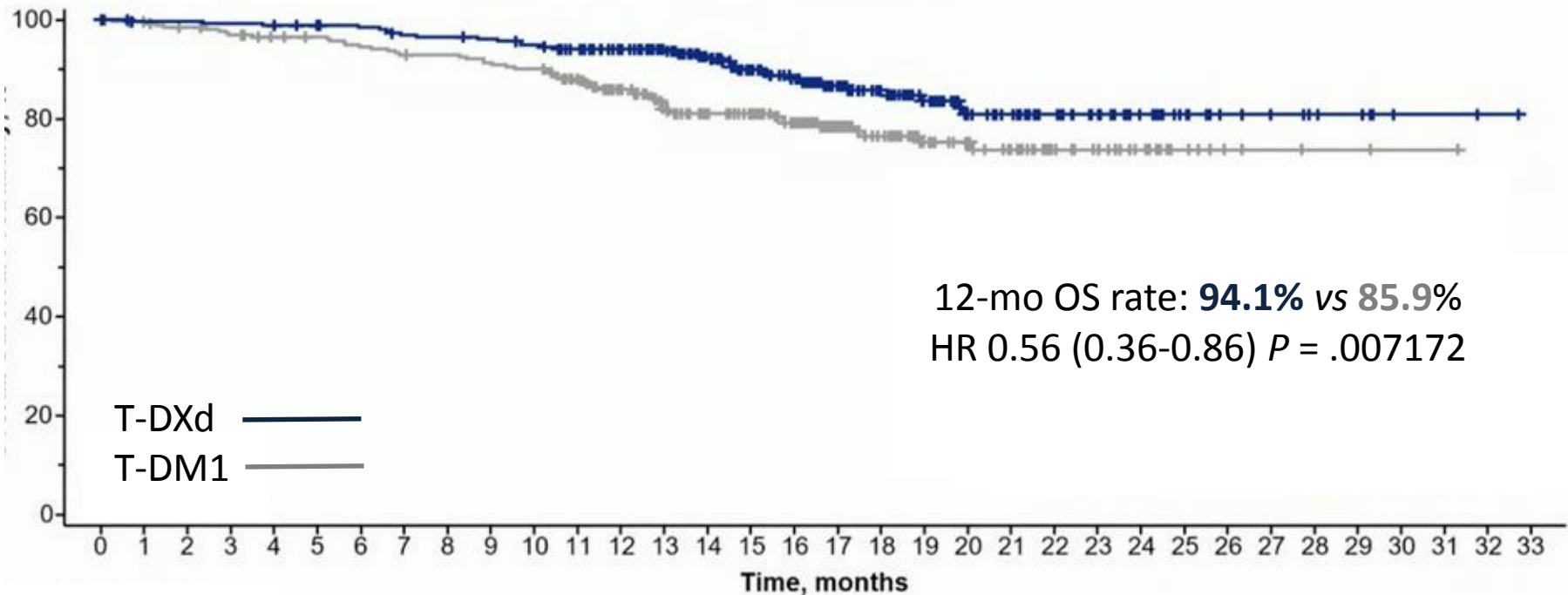
Prior Pertuzumab: 62.1% vs 60.1%

Prior ITK: 16.1% vs 13.7%

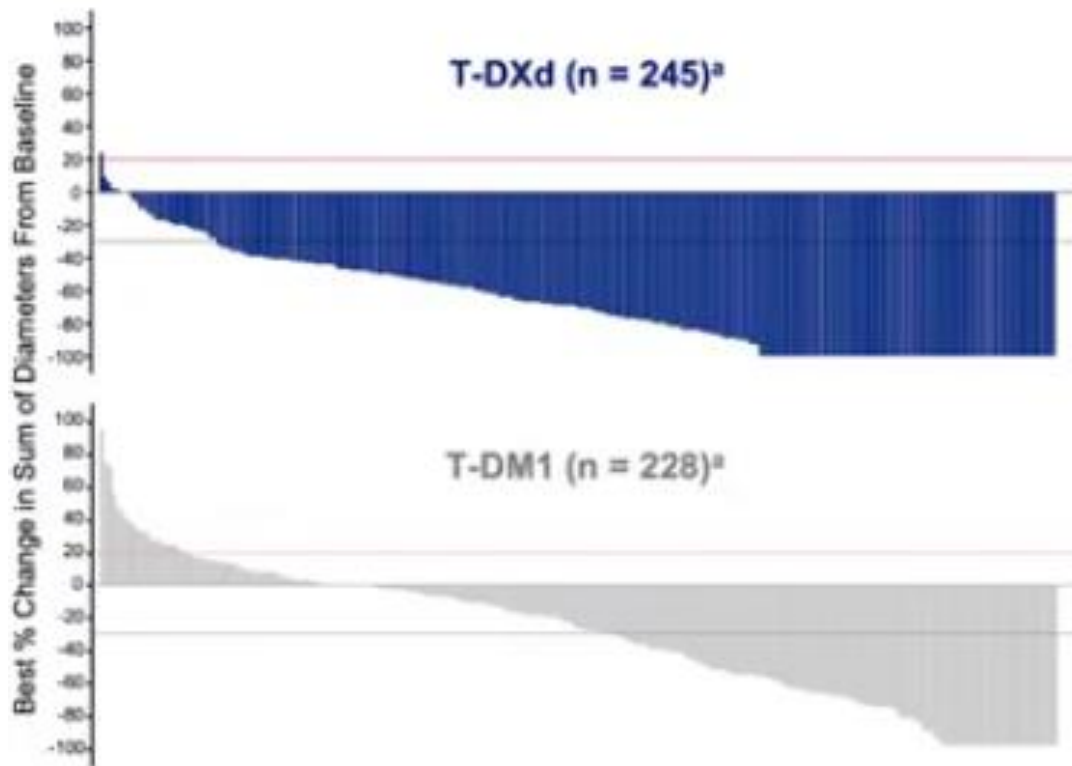
DESTINY Breast03: PFS (BICR)



DESTINY Breast03: Overall survival



DESTINY Breast03: Secondary end points



Confirmed ORR

n (%)^b
[95% CI]

T-DXd (n = 261)	T-DM1 (n = 263)
20 (79.7) [74.3-84.4]	90 (34.2) [28.5-40.3]

P < .0001

CR

42 (16.1)

23 (8.7)

PR

166 (63.6)

67 (25.5)

SD

44 (16.9)

112 (42.6)

PD

3 (1.1)

46 (17.5)

Not evaluable

6 (2.3)

15 (5.7)

CR + PR + SD
(DCR)

252 (96.6)

202 (76.8)

DESTINY Breast03: Safety profile

Adverse events G3/4 : **45.5%** vs **39.8%**

Neutropenia G3-4: **19.1%** vs **3.4%**

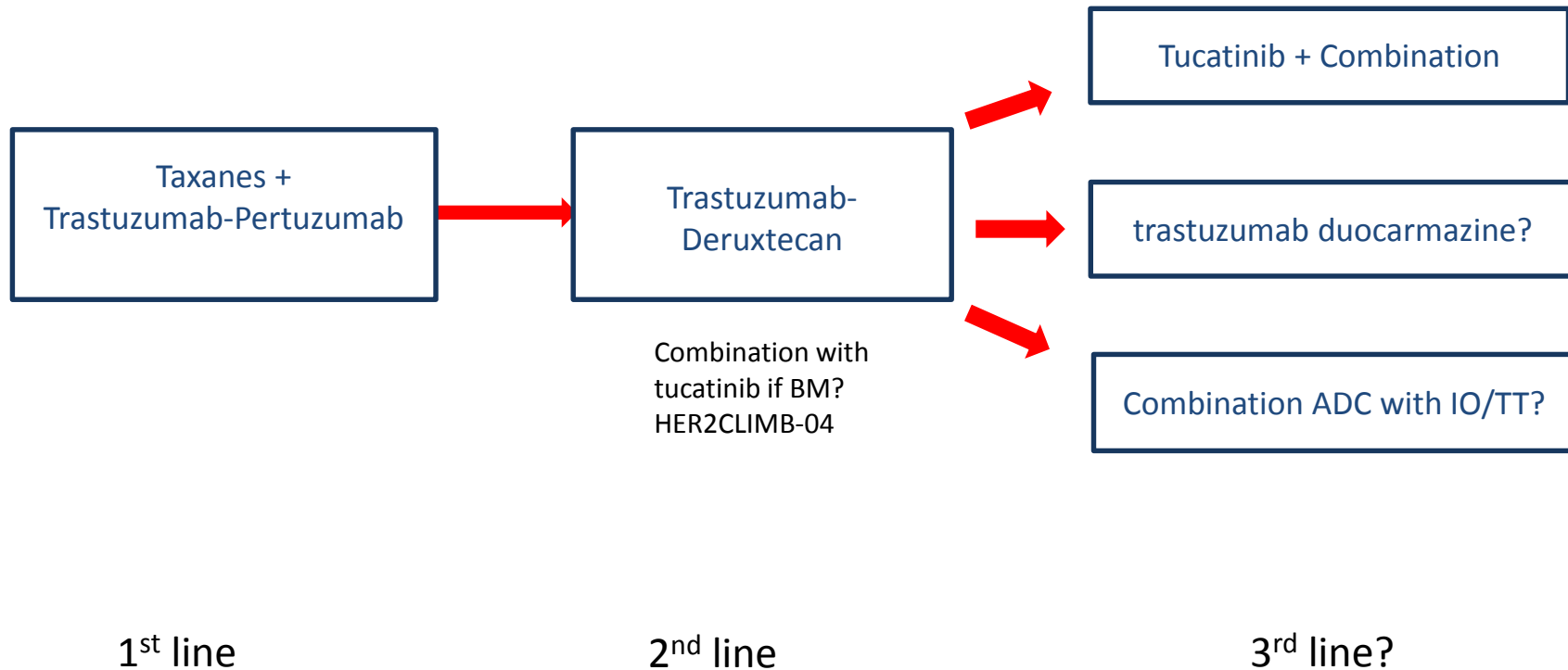
Thrombocytopenia G3-4: **7.0%** vs **24.9%**

Nausea G3-4: **6.6%** vs **0.4%**

Discontinuation: **21,4%** vs **12,6%**

27 cases of ILD (10.5%): low Grade (9.7%), no G4 or G5

A new treatment algorithm?



Breast Cancer

Metastatic setting

DESTINY Breast03
(2nd line T-DXd HER2+)

KEYNOTE 355
(1st line Pembrolizumab TN)

MONALEESA 2
(1st line Ribociclib Luminal)

Neoadjuvant setting

BRIGHTNESS
(Carboplatine TNBC)

KEYNOTE 522
(Pembrolizumab TNBC)

KEYNOTE 355: a randomized, double-blind, placebo-controlled phase III trial

From January 2017 through June 2018

Locally advanced or metastatic TNBC

No previous therapy in metastatic setting or completion of previous therapy with curative intent ≥ 6 mo

ECOG 0-1

No active CNS metastases

No active autoimmune disease

n = 847

**R
2:1**

**Pembrolizumab* +
Chemotherapy
n = 566**

Dual Primary EP: PFS and OS

- PD-L1 CPS ≥ 10
- PD-L1 CPS ≥ 1
- Intention-to-treat populations

Stratification factors

- ⇒ Chemotherapy (taxane or gemcitabine-carboplatin)
- ⇒ PD-L1 tumor expression (CPS ≥ 1 or <1)
- ⇒ Prior treatment with same class chemo in the neoadjuvant or adjuvant setting

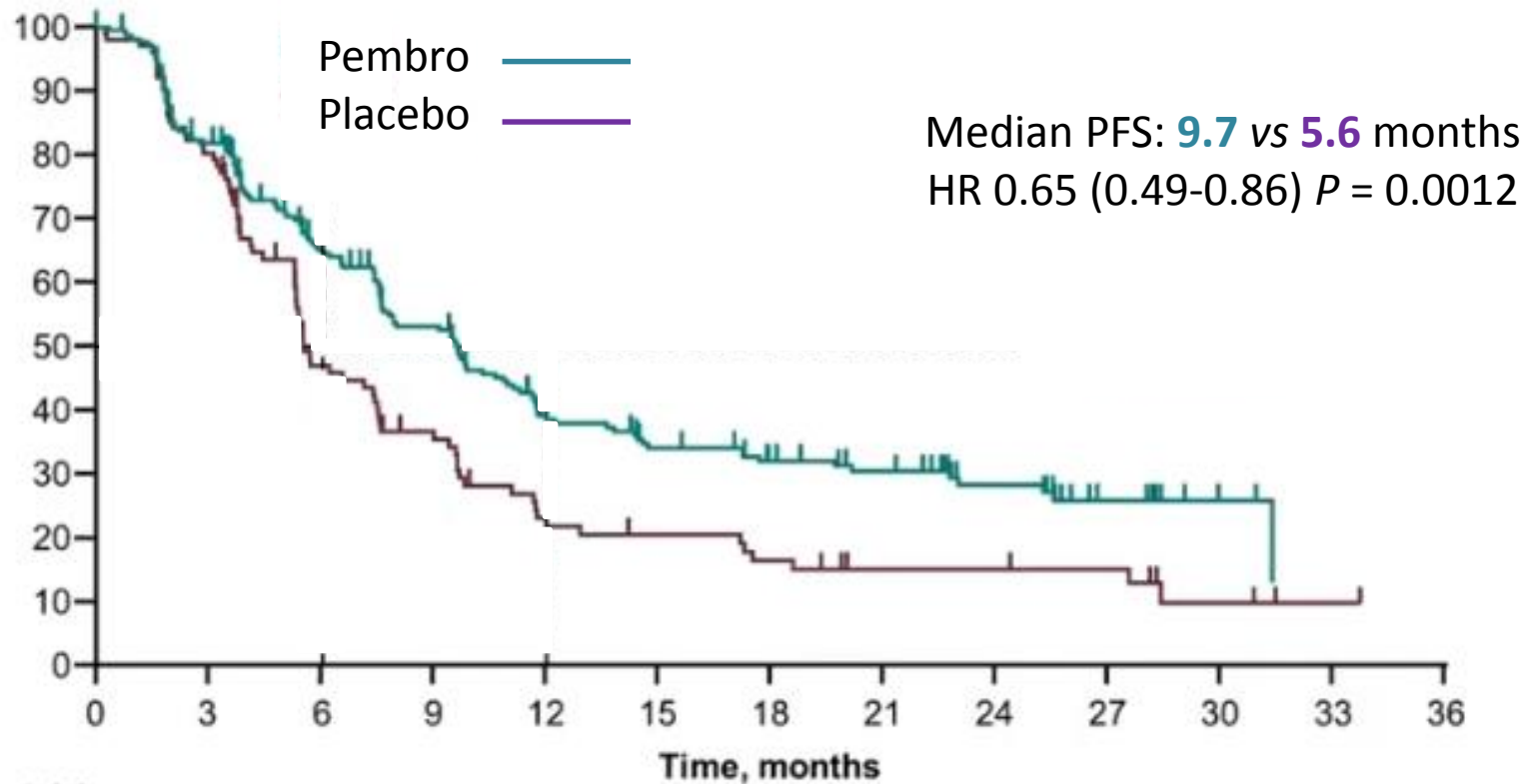
**Placebo* +
Chemotherapy
n = 281**

** Up to 35 cycles*

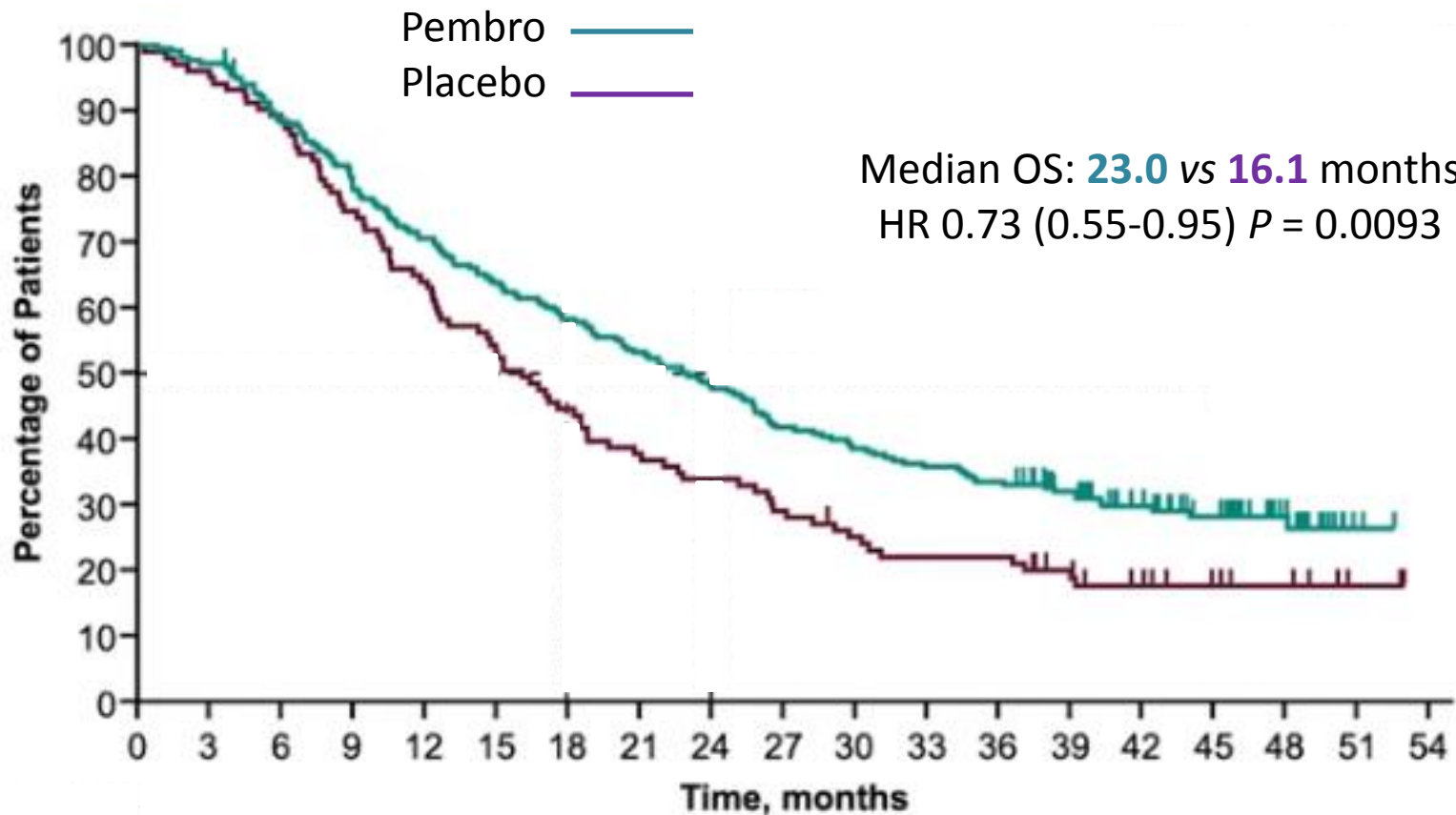
KEYNOTE 355: Baseline characteristics

Characteristic, n (%)	All Subjects, N = 847	
	Pembro + Chemo N = 566	Placebo + Chemo N = 281
Age, median (range), yrs	53 (25-85)	53 (22-77)
ECOG PS 1	232 (41.0)	108 (38.4)
PD-L1-positive CPS \geq 1	425 (75.1)	211 (75.1)
PD-L1-positive CPS \geq 10	220 (38.9)	103 (36.7)

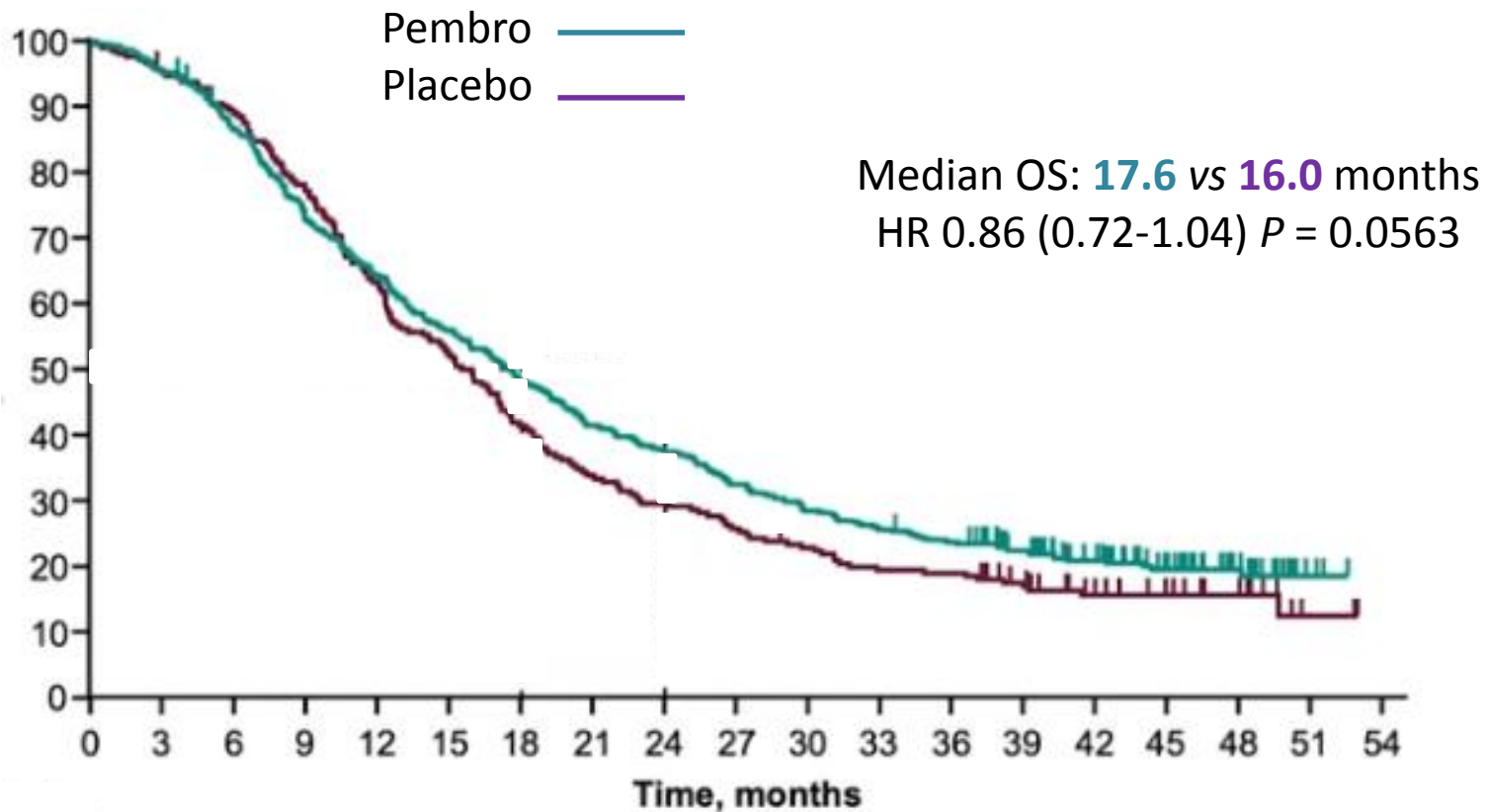
KEYNOTE 355: Progression-Free Survival (PD-L1 CPS ≥ 10)



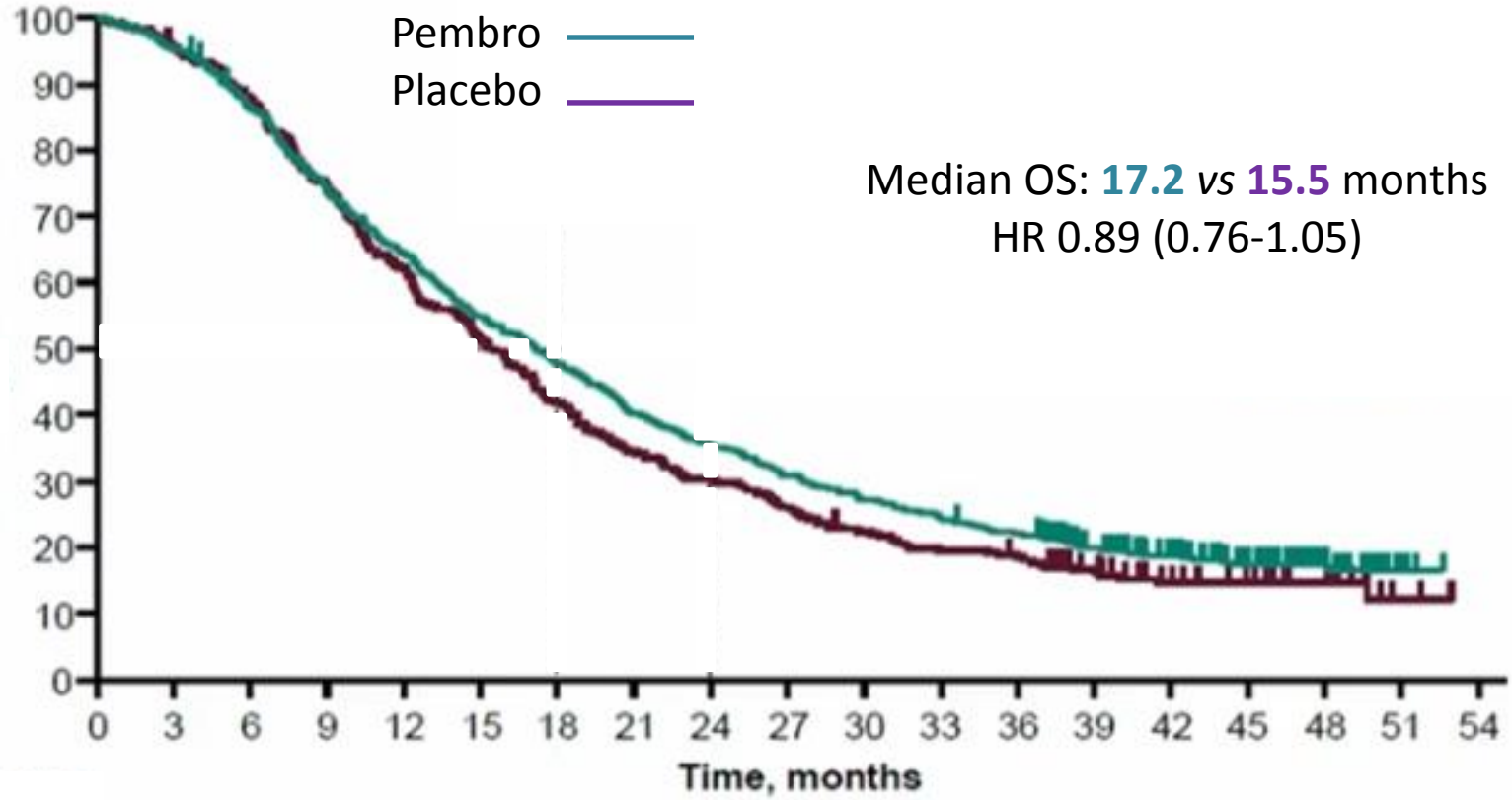
KEYNOTE 355: Overall Survival (PD-L1 CPS ≥ 10)



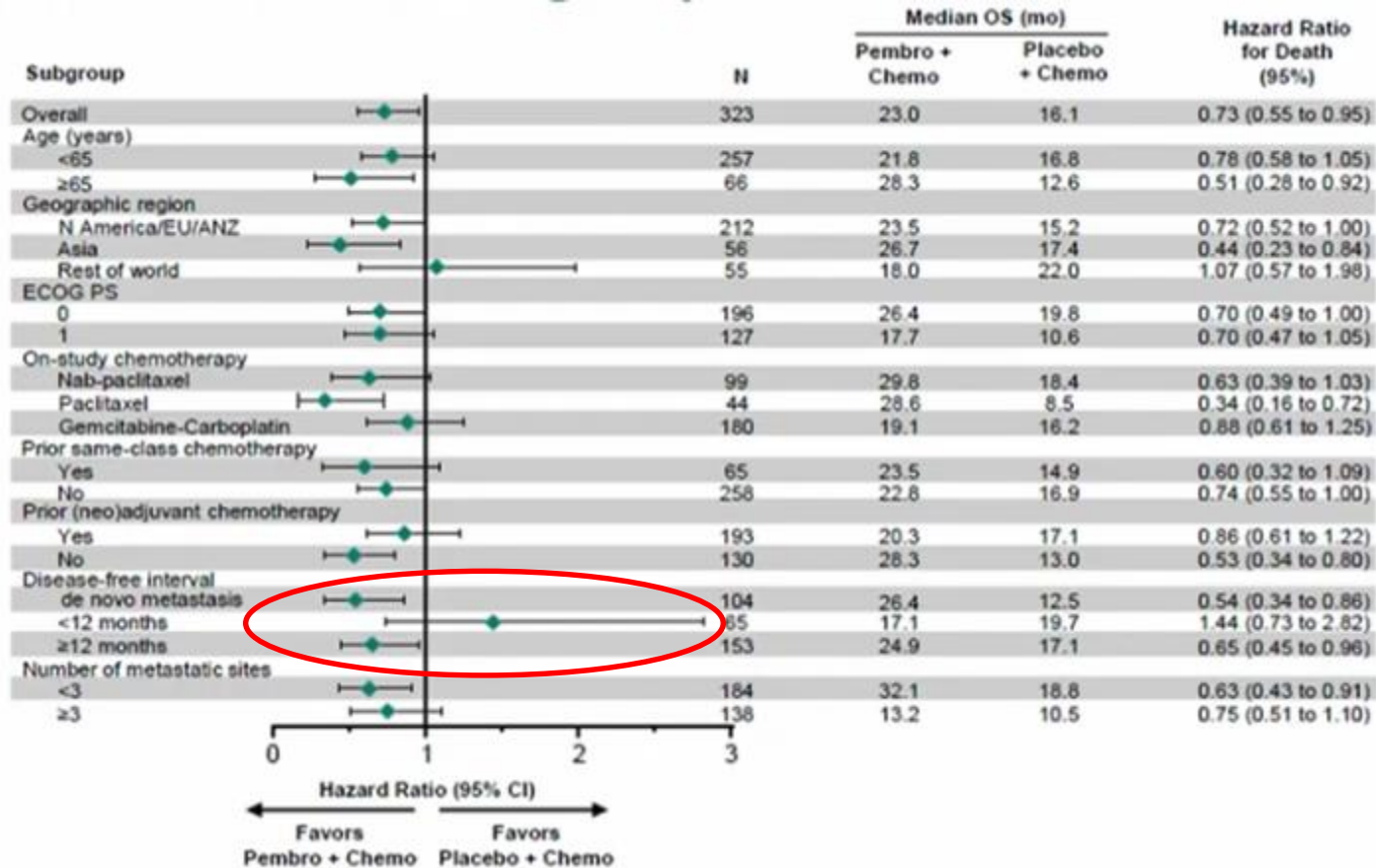
KEYNOTE 355: Overall Survival (PD-L1 CPS ≥ 1)



KEYNOTE 355: Overall Survival (ITT population)



KEYNOTE 355: Overall Survival in subgroups (PD-L1 CPS ≥ 10)



Median overall survival in PD-L1+ population

KEYNOTE 355 (Chemo +/- pembrolizumab)

=> (CPS \geq 10): **23.0 vs 16.1 months; HR 0.73 (0.55-0.95); p = 0.0093**

Impassion 130 (Nab-paclitaxel +/- atezolizumab)

=> (IC 1%): 25.4 vs 17.9 months; HR 0.67 (0.53-0.86); p not formally tested

IMpassion 131 (Paclitaxel +/- atezolizumab)

=> (IC 1%): 22.1 vs 28.3 months; HR 1.11 (0.76-0.1.64); p not formally tested

Breast Cancer

Metastatic setting

DESTINY Breast03
(2nd line T-DXd HER2+)

KEYNOTE 355
(1st line Pembrolizumab TN)

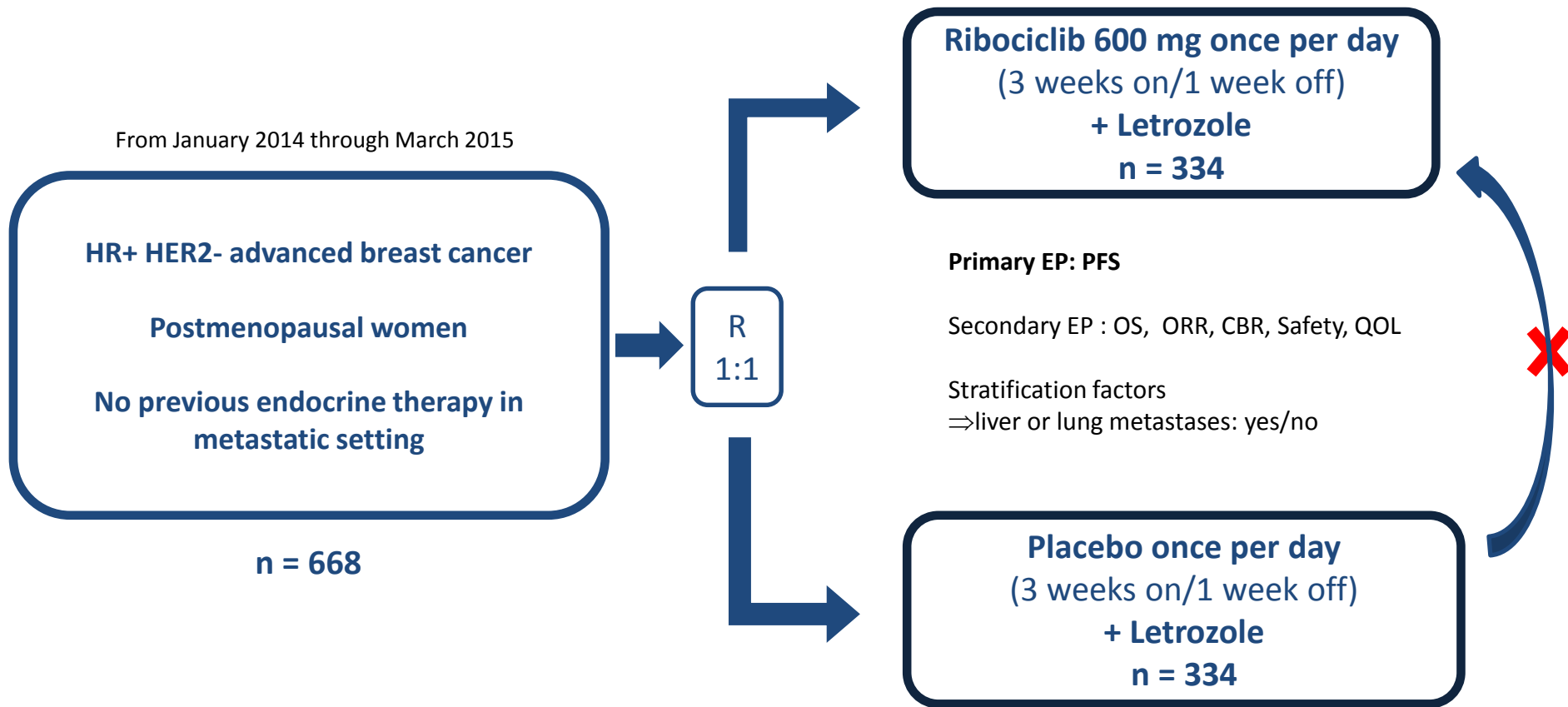
MONALEESA 2
(1st line Ribociclib Luminal)

Neoadjuvant setting

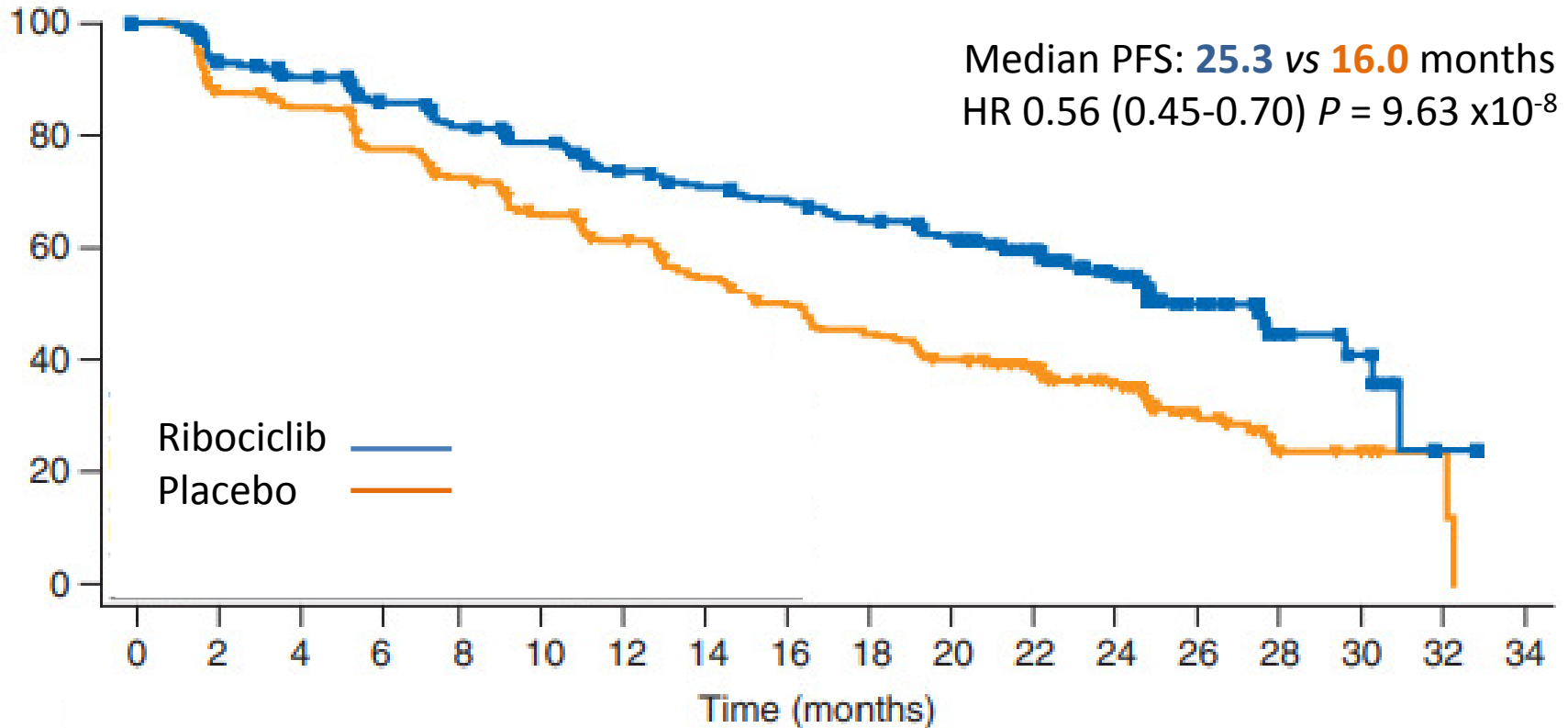
BRIGHTNESS
(Carboplatine TNBC)

KEYNOTE 522
(Pembrolizumab TNBC)

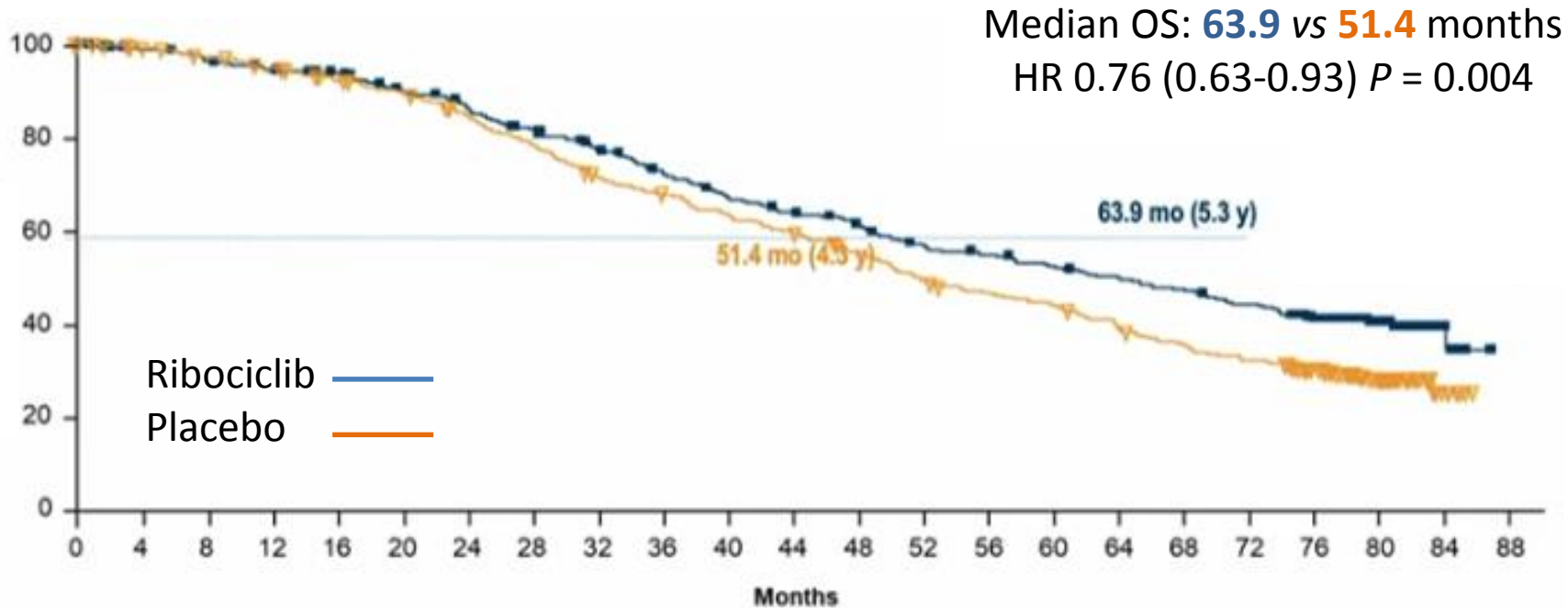
MONALEESA-2: a randomized, double-blind, placebo-controlled phase III trial



MONALEESA-2: Progression-Free Survival



MONALEESA-2: Overall Survival



Breast Cancer

Metastatic setting

DESTINY Breast03
(2nd line T-DXd HER2+)

KEYNOTE 355
(1st line Pembrolizumab TN)

MONALEESA 2
(1st line Ribociclib Luminal)

Neoadjuvant setting

BRIGHTNESS
(Carboplatine TNBC)

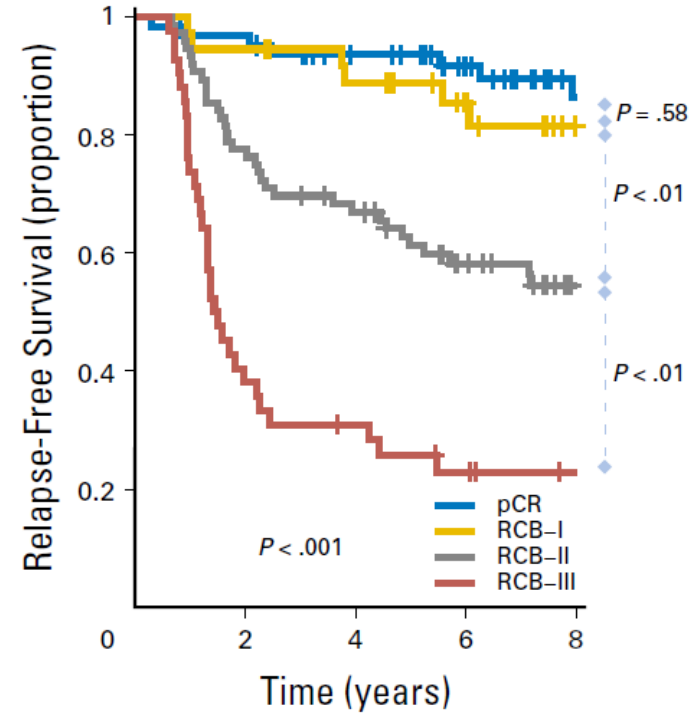
KEYNOTE 522
(Pembrolizumab TNBC)

TNBC: Neoadjuvant setting

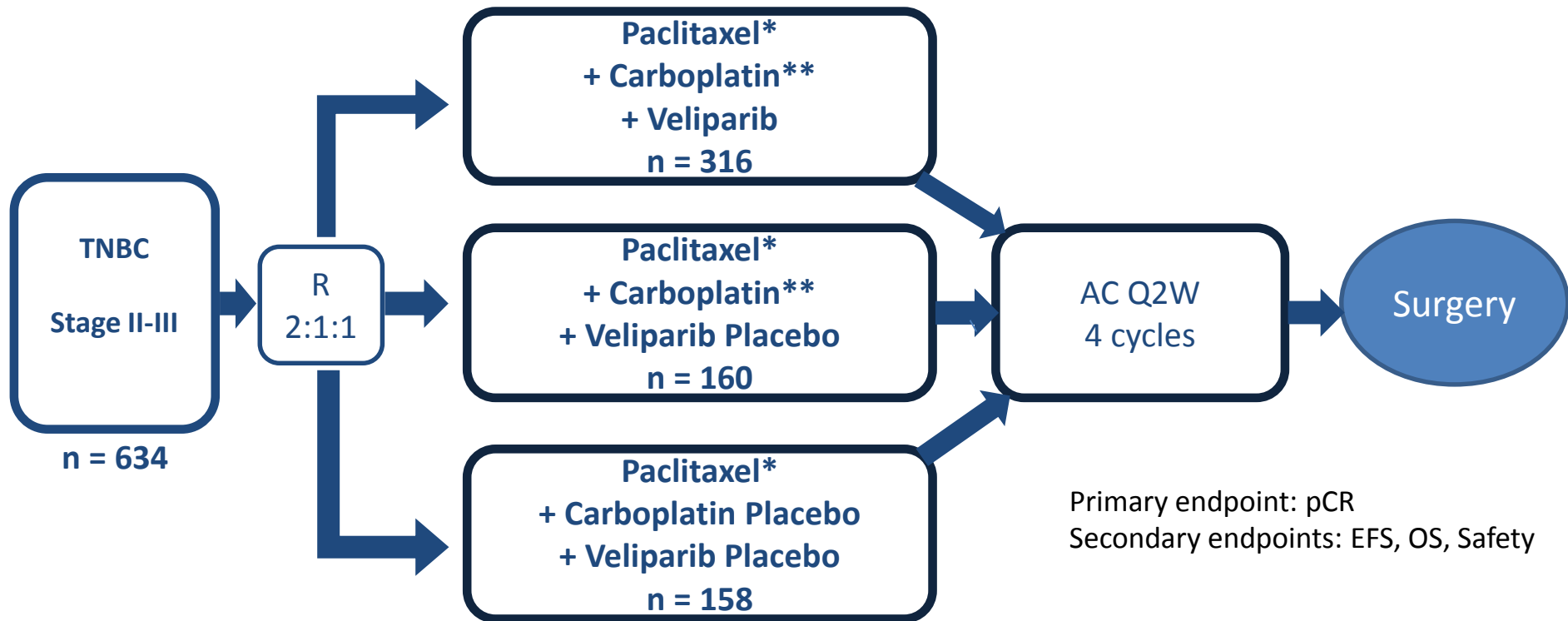
SOC: EC-Paclitaxel dose dense (> 2 cm or N+)

Correlation between pathological response and prognostic
Symmans JCO 2017, Long-Term Prognostic Risk After Neoadjuvant Chemotherapy Associated With Residual Cancer Burden and Breast Cancer Subtype.

Platinum-based chemo increase pCR, but no evidence in EFS
Poggio, Annals Of Oncology 2018; Platinum-based neoadjuvant chemotherapy in triple-negative breast cancer: a systematic review and meta-analysis



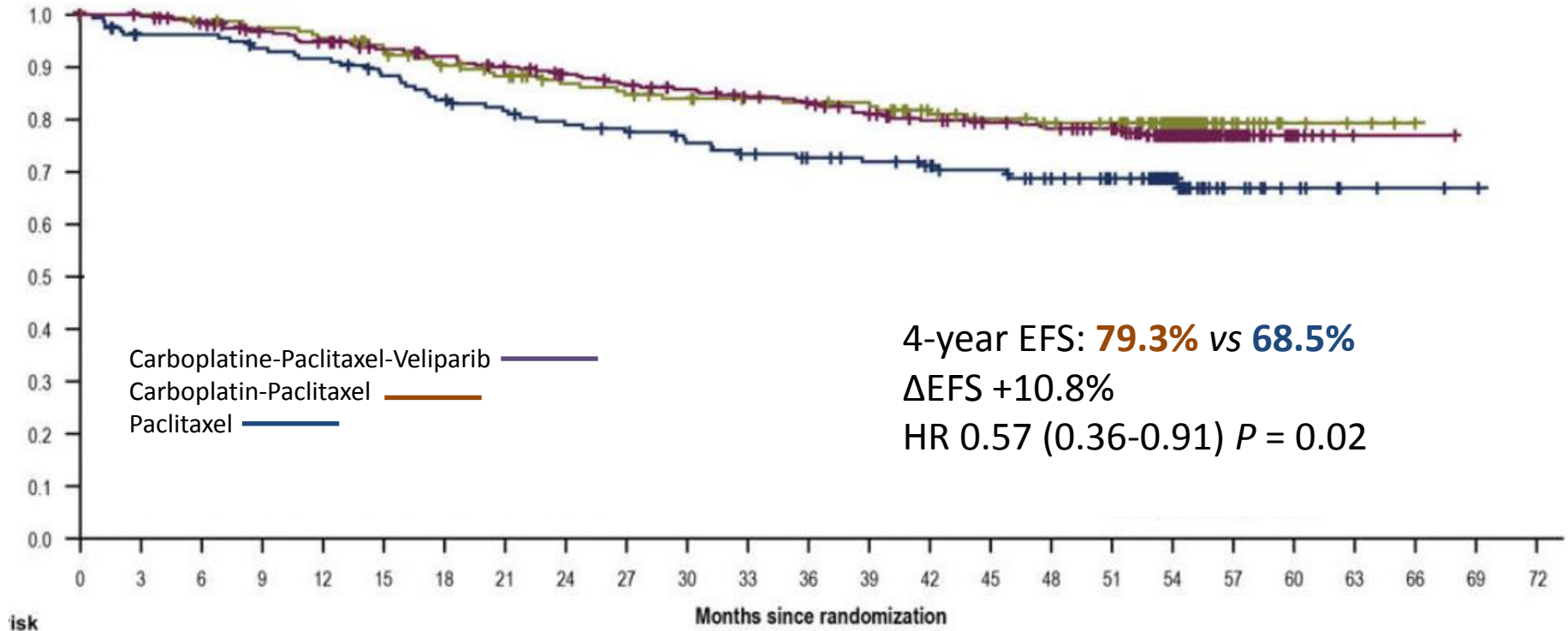
BRIGHTNESS : Phase III trial



Primary endpoint: pCR
Secondary endpoints: EFS, OS, Safety

*Paclitaxel 80 mg/m² weekly (12 doses in up to 16 weeks) **Carboplatin AUC 6 Q3W (4 cycles)

BRIGHTNESS : EFS



Breast Cancer

Metastatic setting

DESTINY Breast03
(2nd line T-DXd HER2+)

KEYNOTE 355
(1st line Pembrolizumab TN)

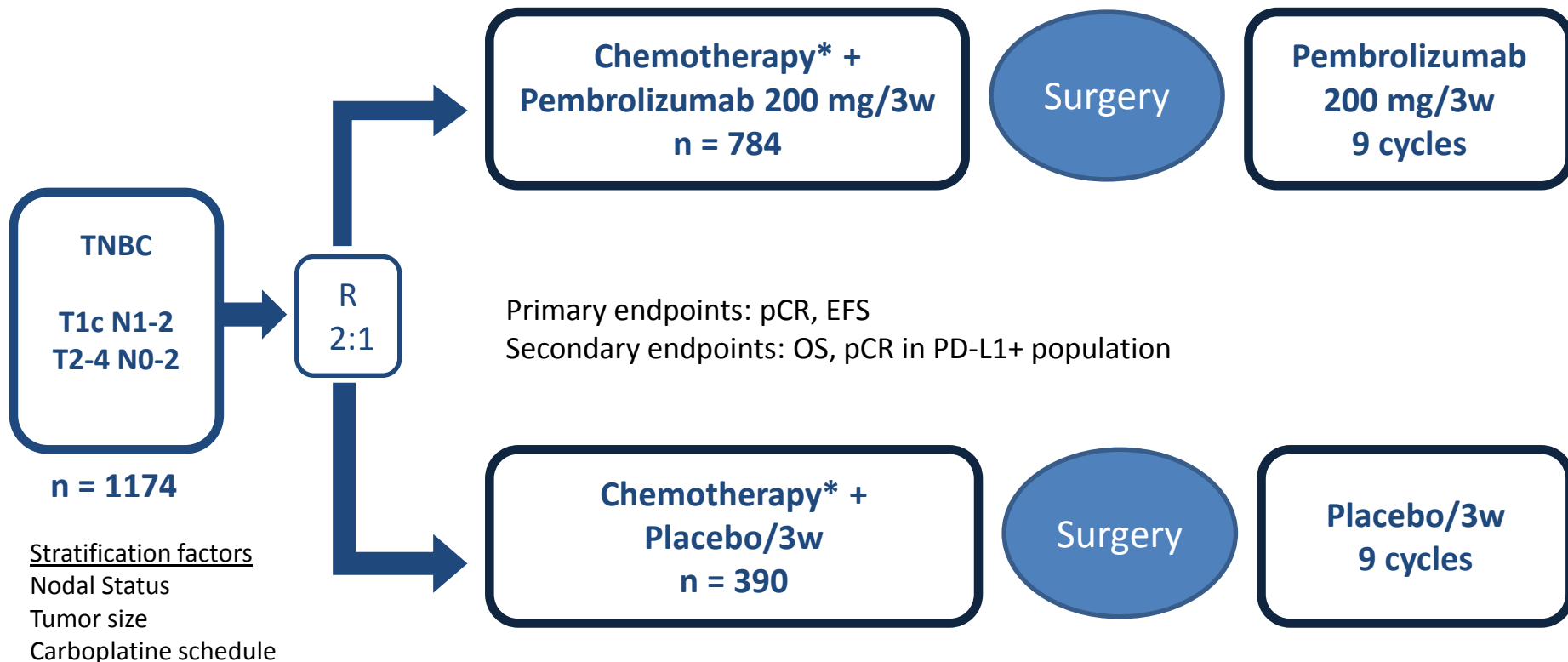
MONALEESA 2
(1st line Ribociclib Luminal)

Neoadjuvant setting

BRIGHTNESS
(Carboplatine TNBC)

KEYNOTE 522
(Pembrolizumab TNBC)

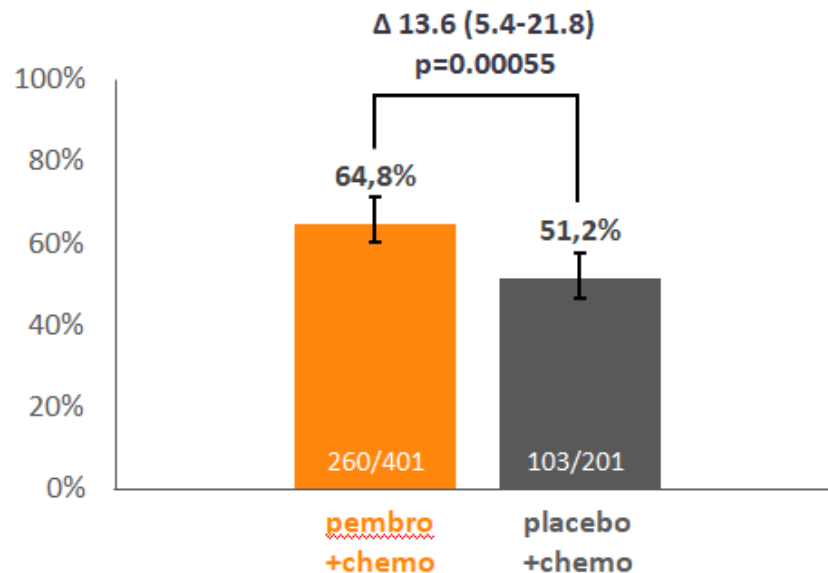
KEYNOTE-522 : a randomized, double-blind, placebo-controlled phase III trial



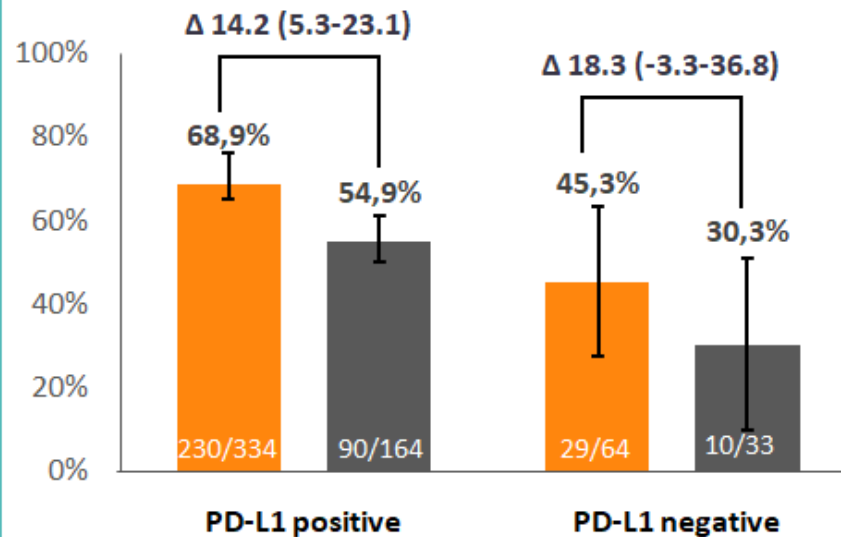
* 12 weeks of Carboplatine/paclitaxel followed by 4 cycles of EC or AC (Q3W)

KEYNOTE-522 : pCR

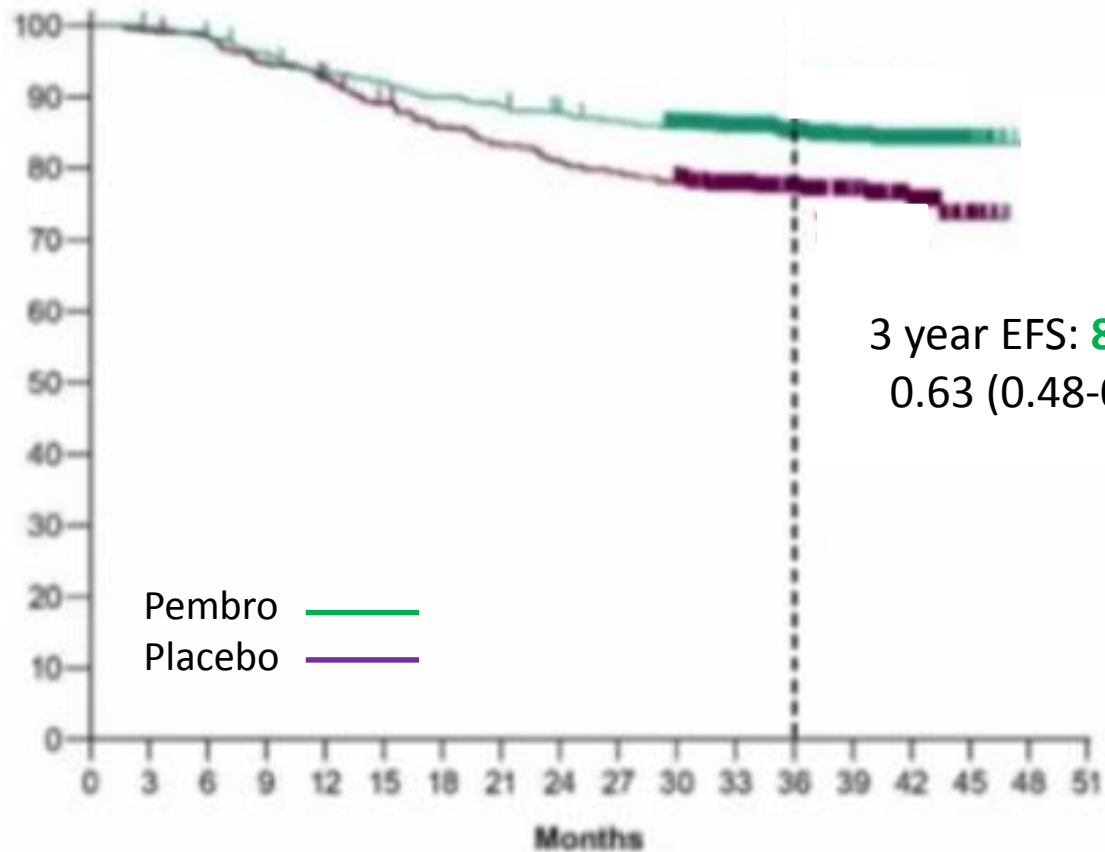
Primary endpoint: ypT0/Tis ypN0



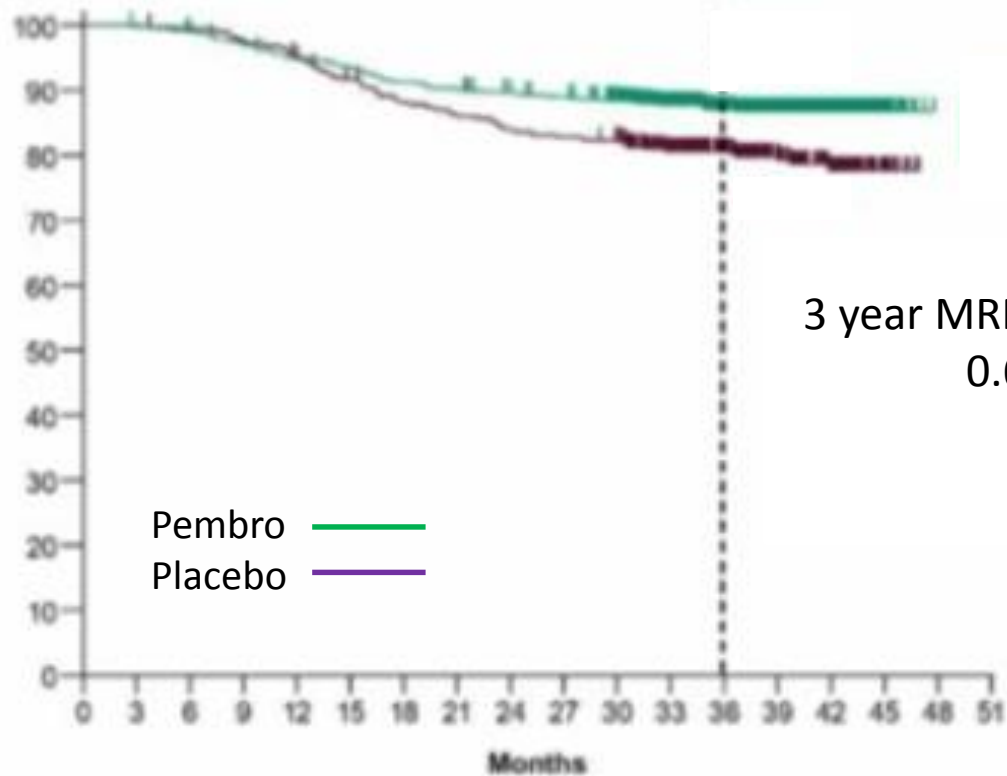
PD-L1 status correlation: ypT0/Tis ypN0



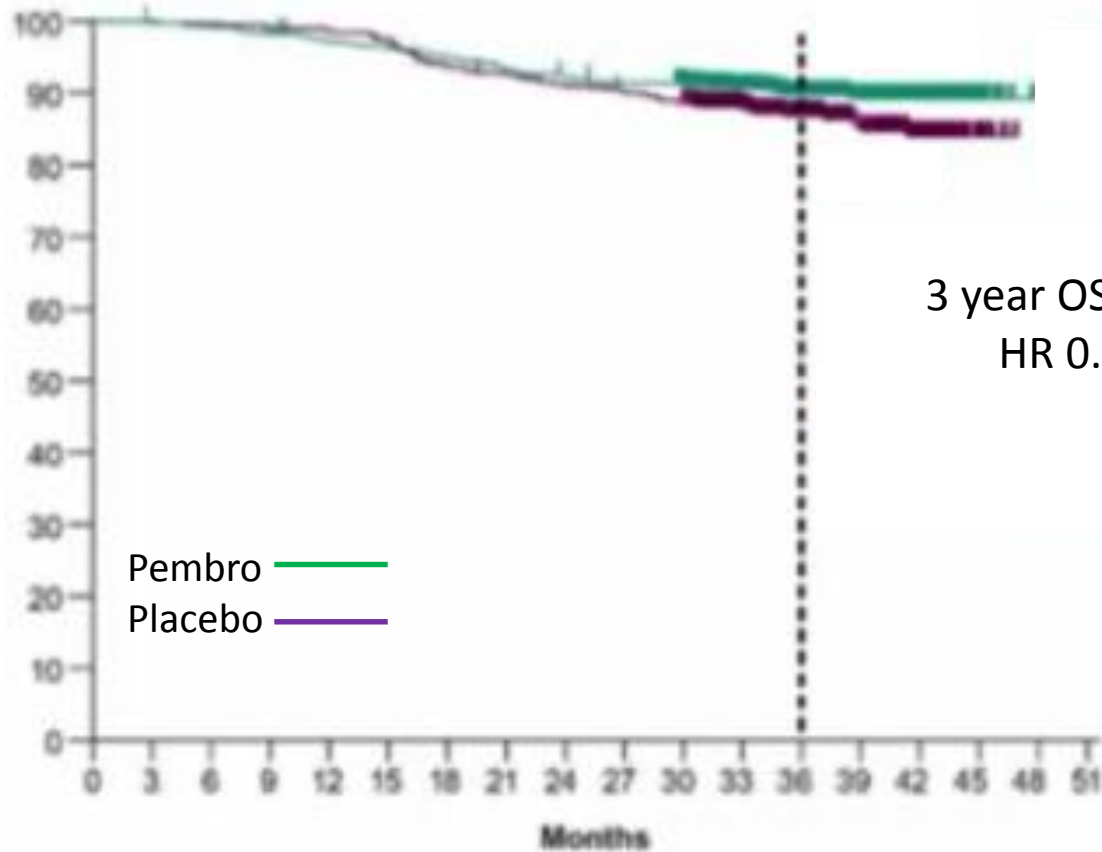
KEYNOTE-522 : Event-Free Survival



KEYNOTE-522 : Metastatic recurrence-Free Survival



KEYNOTE-522 : 3 year Overall Survival



3 year OS: **89.7%** vs **86.9%**
HR 0.72 (0.51-1.02)

Pembro —
Placebo —

KEYNOTE 522: Safety profile

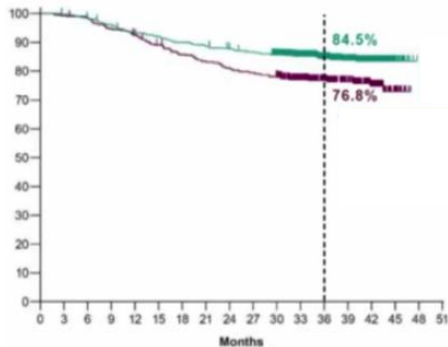
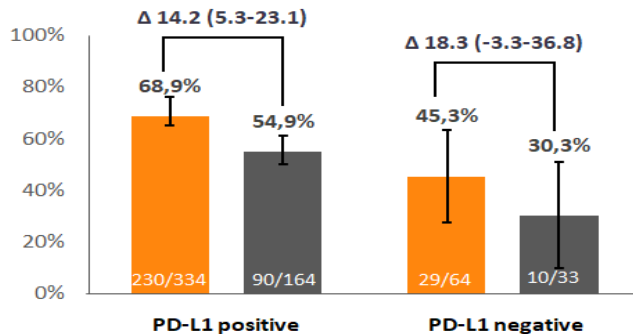
	Pembro + chemo n = 783	Placebo + chemo n = 389
Any grade	43.6%	21.9%
Grade 3-5	14.9%	2.1%
Led to death	0.3%	0
Led to discontinuation	10.9%	2.6%

Endocrine adverse events in early setting => Potentially irreversible

Immunotherapy in neoadjuvant setting in TNBC: Phase 3 studies

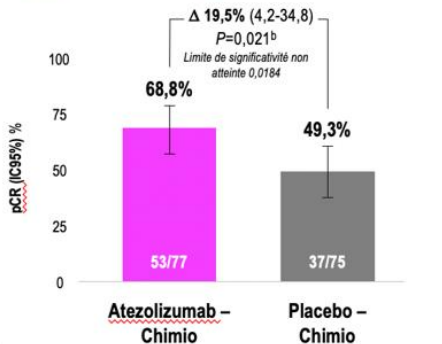
KEYNOTE 522

PD-L1 status correlation: ypT0/Tis ypN0

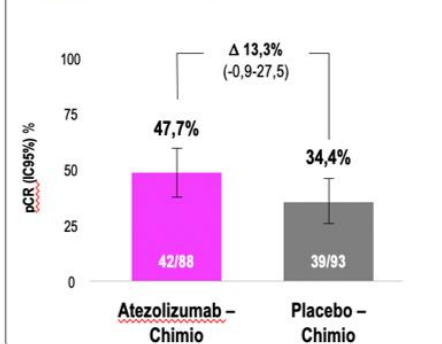


IMpassion 031

pCR (IC95%), ypT0/is ypN0 (PD-L1-positive)



pCR (IC95%), ypT0/is ypN0 (PD-L1-negative)



EFS and OS non evaluated

Breast Cancer

Metastatic setting

DESTINY Breast03
(2nd line T-DXd HER2+)

$\Delta 1\text{YPFS} +41.7\%$

KEYNOTE 355
(1st line Pembrolizumab TN)

$\Delta \text{OS} +6.9$ months

MONALEESA 2
(1st line Ribociclib Luminal)

$\Delta \text{OS} +12.5$ months

Neoadjuvant setting

BRIGHTNESS
(Carboplatine TNBC)

$\Delta 4\text{YEFS} +10.8\%$

KEYNOTE 522
(Pembrolizumab TNBC)

$\Delta 3\text{YEFS} +7.7\%$

Gynecological Cancers

EMPOWER

(2nd line Cemeplimab in metastatic cervical cancer)

KEYNOTE 826

(1st line Pembrolizumab in metastatic cervical cancer)

OReO-ENGOT-Ov38

(Olaparib retreatment in late recurrent ovarian cancer)

Gynecological Cancers

EMPOWER

(2nd line Cemeplimab in metastatic cervical cancer)

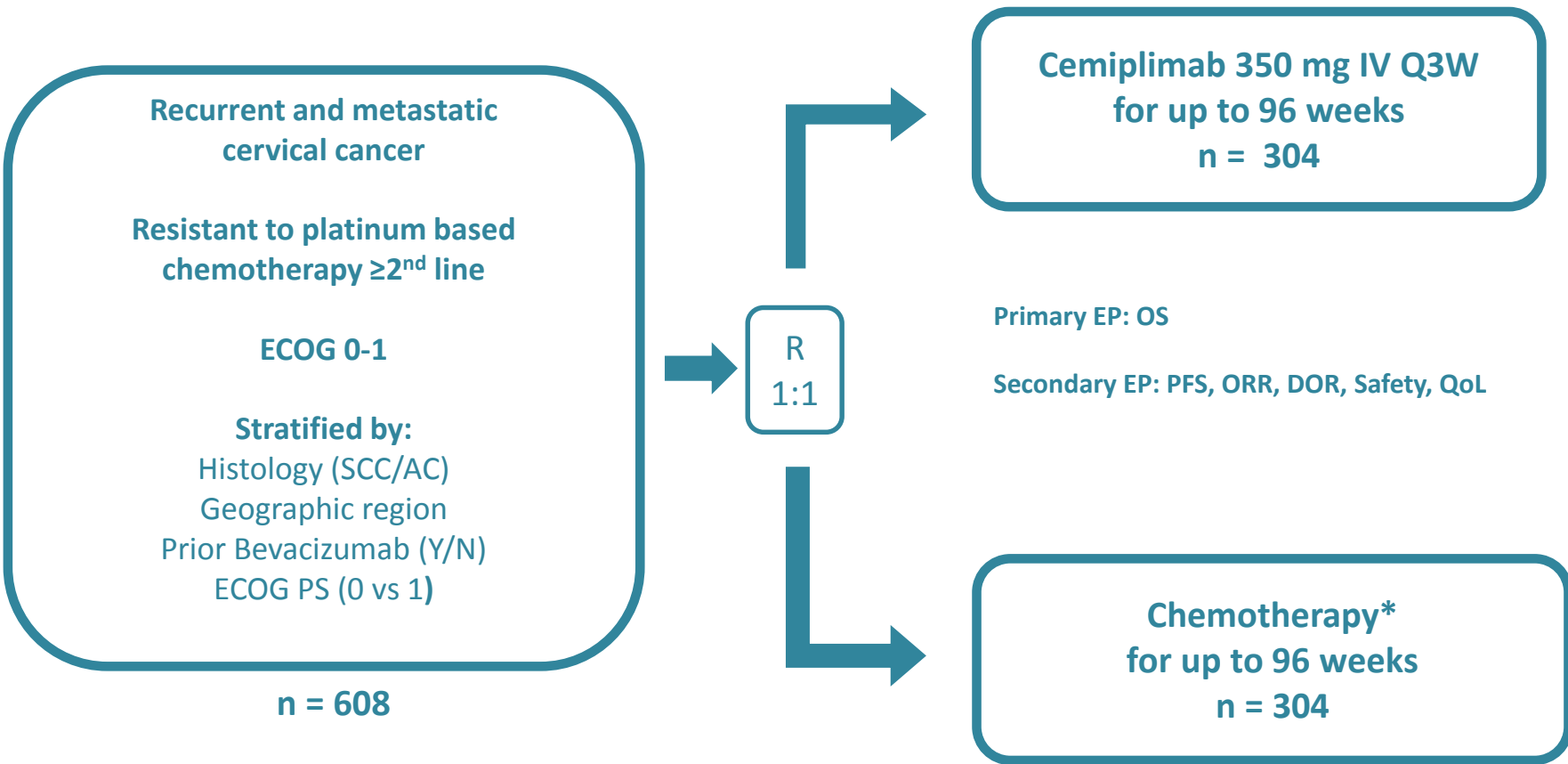
KEYNOTE 826

(1st line Pembrolizumab in metastatic cervical cancer)

OReO-ENGOT-Ov38

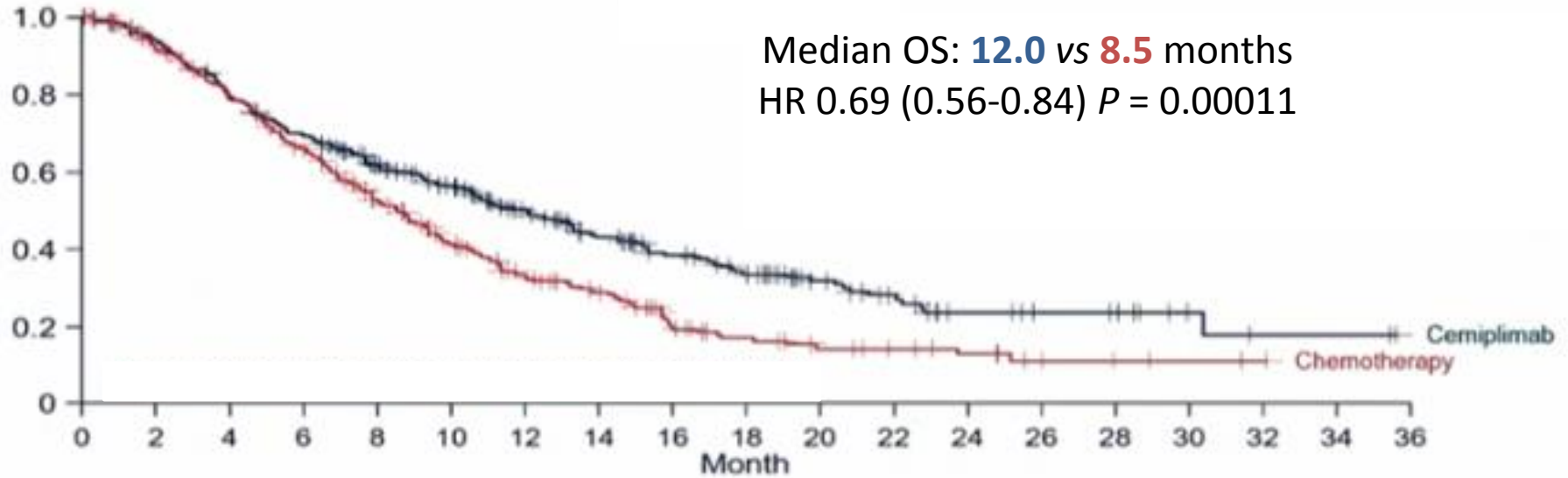
(Olaparib retreatment in late recurrent ovarian cancer)

EMPOWER cervical: phase III trial



* Pemetrexed, Gemcitabine, Topotecan, Irinotecan, Vinorelbine

EMPOWER cervical: Overall Survival



Gynecological Cancers

EMPOWER

(2nd line Cemeplimab in metastatic cervical cancer)

KEYNOTE 826

(1st line Pembrolizumab in metastatic cervical cancer)

OReO-ENGOT-Ov38

(Olaparib retreatment in late recurrent ovarian cancer)

KEYNOTE 826: phase III trial

Persistent, Recurrent or metastatic cervical cancer not amenable to curative treatment

No prior systemic chemotherapy (prior chemoradiotherapy permitted)

ECOG 0-1

Stratified by:

Metastatic disease at diagnosis (Y/N)

PD-L1 CPS

Planned Bevacizumab use (Y/N)

n = 617

R

1:1

Pembrolizumab 200 mg IV Q3W*

+

Paclitaxel + Cisplatin/Carboplatin IV Q3W

+

Bevacizumab 15 mg/kg IV Q3W

Dual Primary EP: OS, PFS (investigator)

Secondary EP: ORR, DOR, PFS (BICR) Safety

Placebo IV Q3W*

+

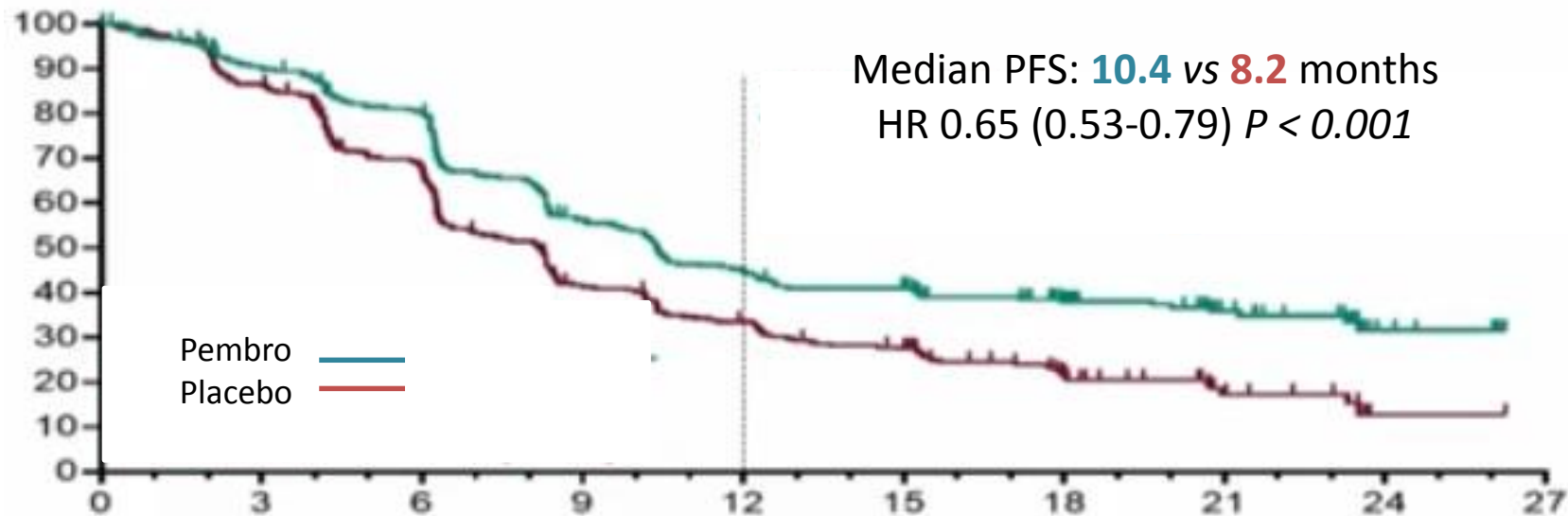
Paclitaxel + Cisplatin/Carboplatin IV Q3W

+

Bevacizumab 15 mg/kg IV Q3W

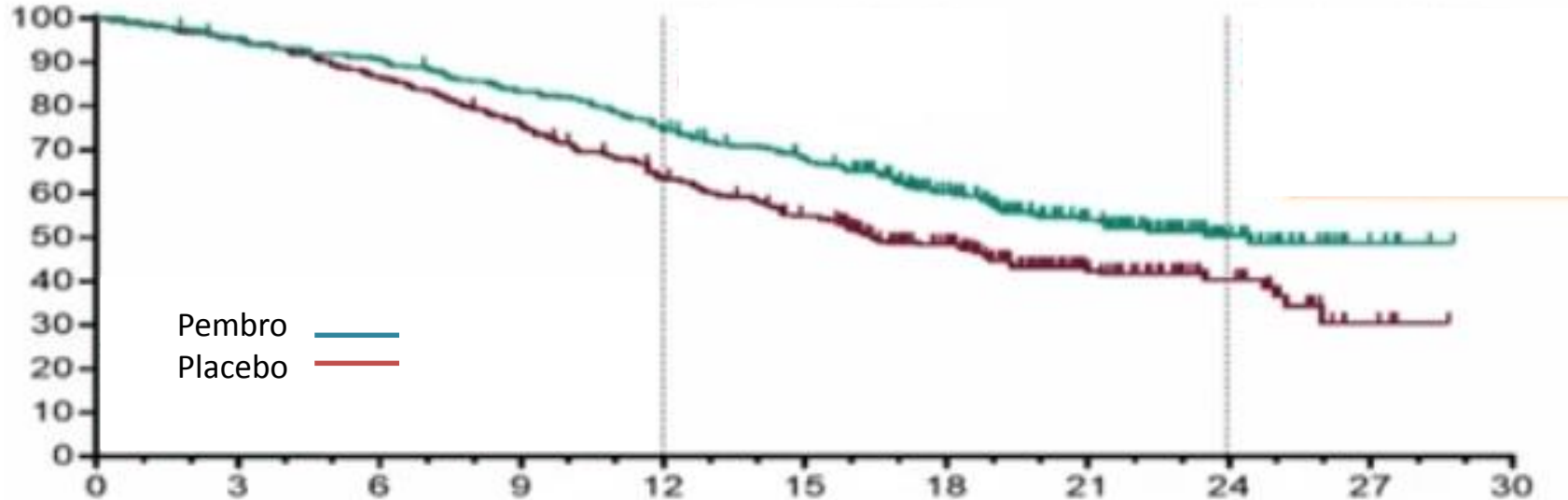
**for up to 35 cycles*

KEYNOTE 826: Progression-Free Survival

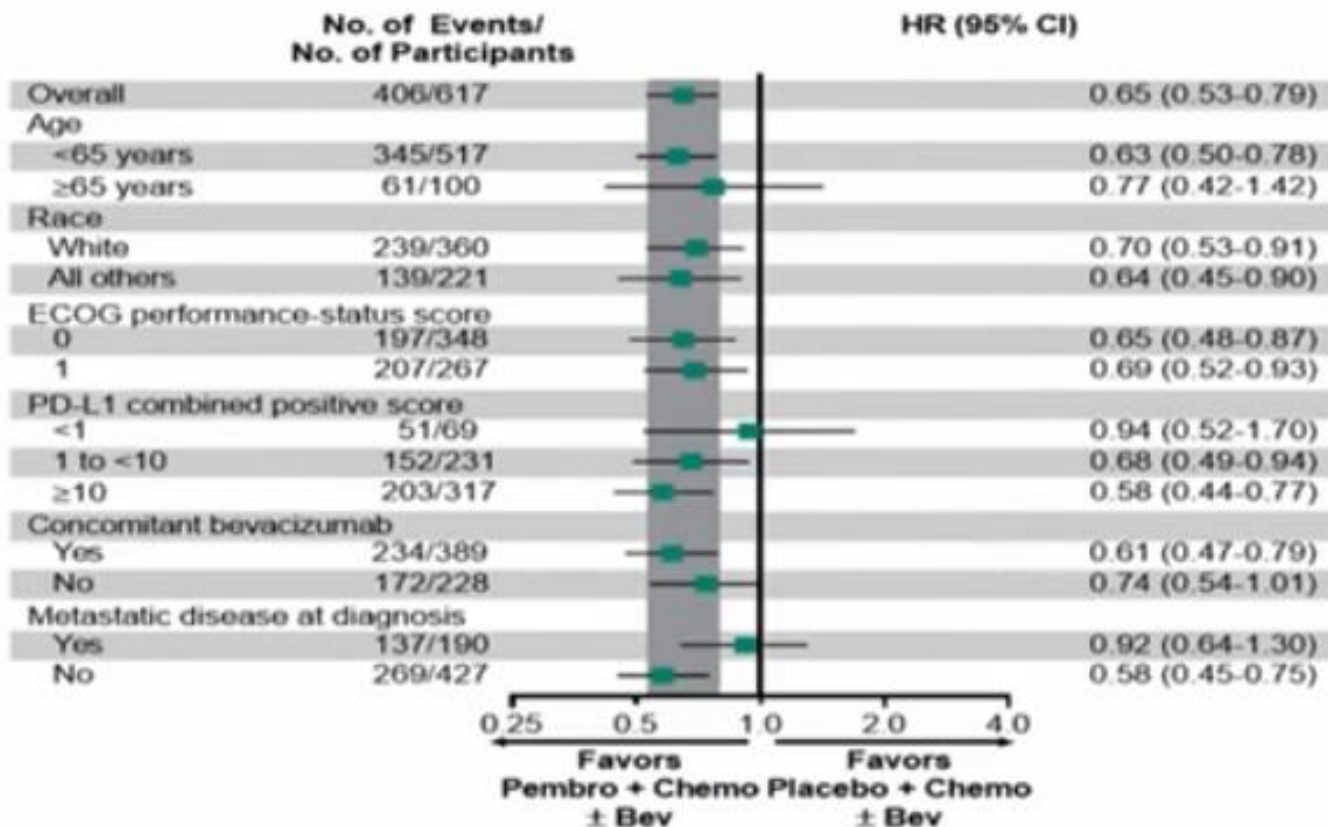


KEYNOTE 826: Overall Survival

Median OS: **24.4** vs **16.5** months
HR 0.67 (0.54-0.84) $P < 0.001$



KEYNOTE 826: Subgroups Overall Survival



Gynecological Cancers

EMPOWER

(2nd line Cemeplimab in metastatic cervical cancer)

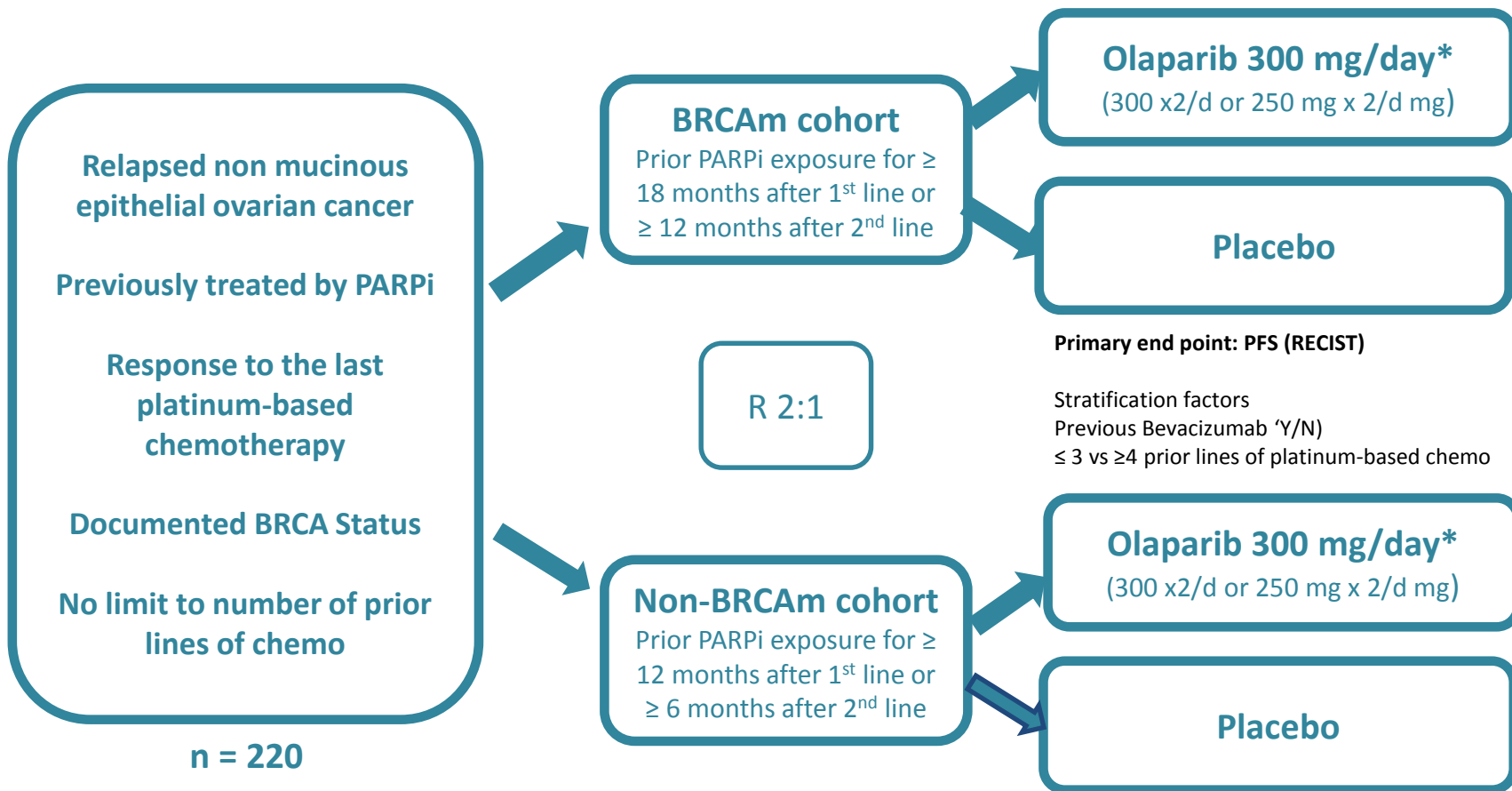
KEYNOTE 826

(1st line Pembrolizumab in metastatic cervical cancer)

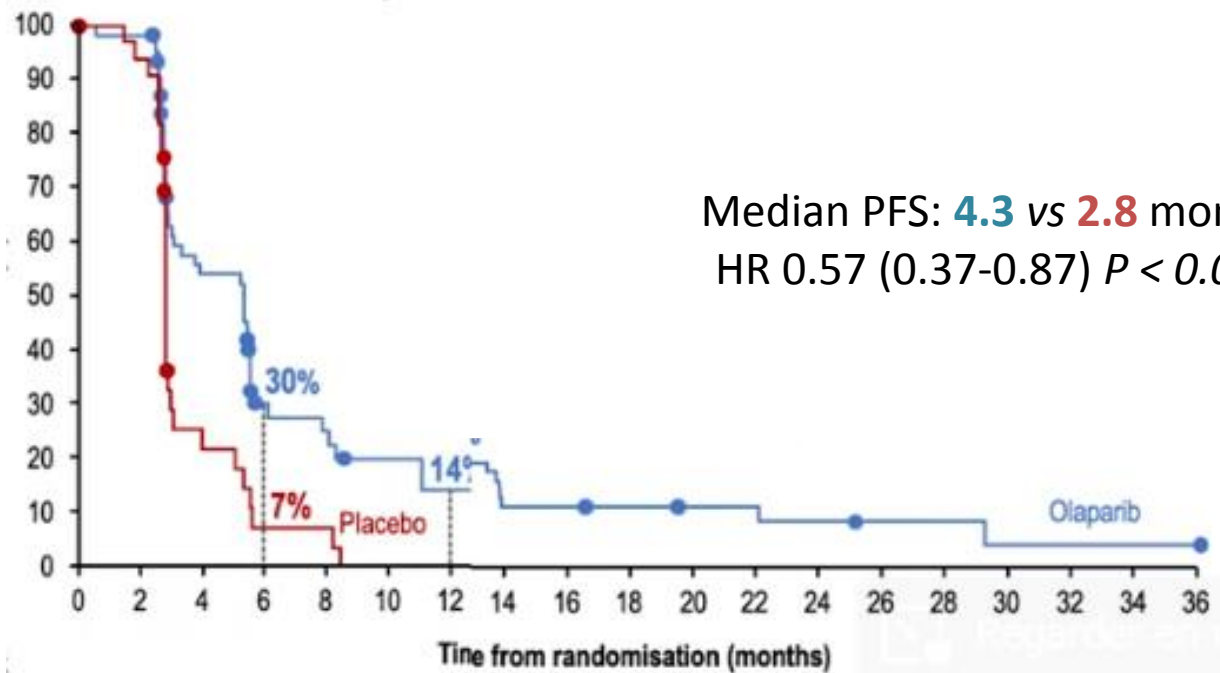
OReO-ENGOT-Ov38

(Olaparib retreatment in late recurrent ovarian cancer)

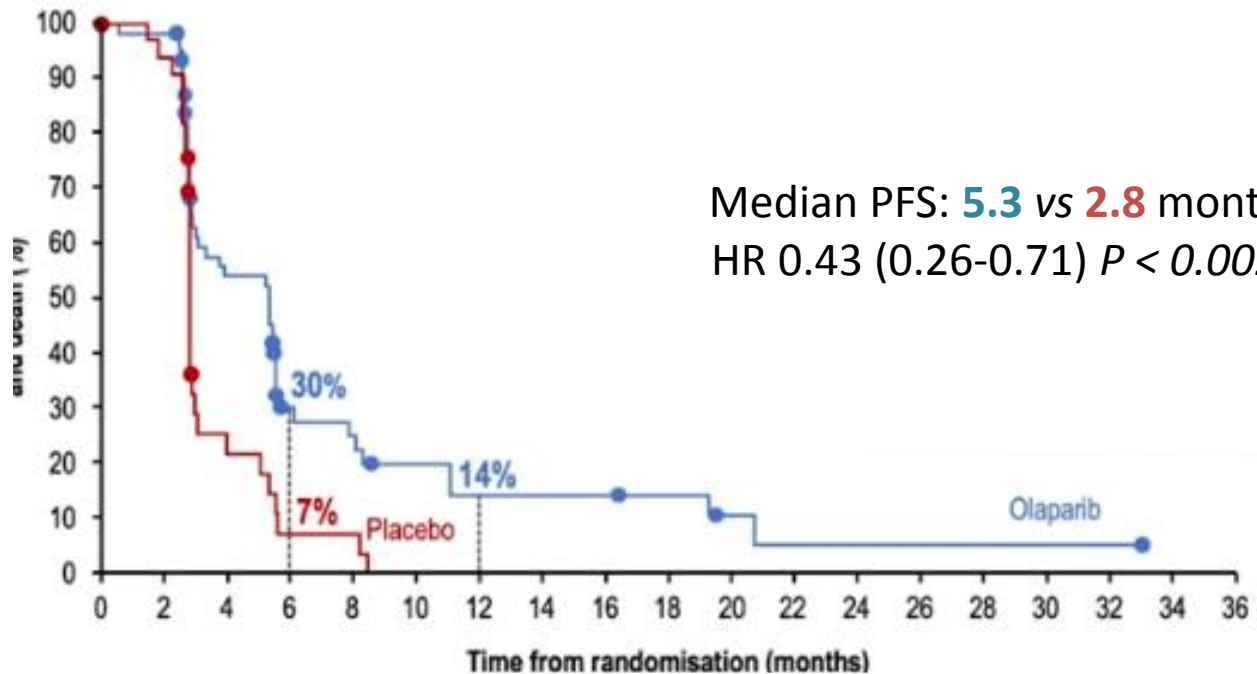
OReO-ENGOT-Ov38



OReO-ENGOT-Ov38: PFS BRCAm cohort



OReO-ENGOT-Ov38: PFS non-BRCAm cohort



Gynecological Cancers

EMPOWER

(2nd line Cemeplimab in metastatic cervical cancer)

Δ OS +3.5 months

KEYNOTE 826

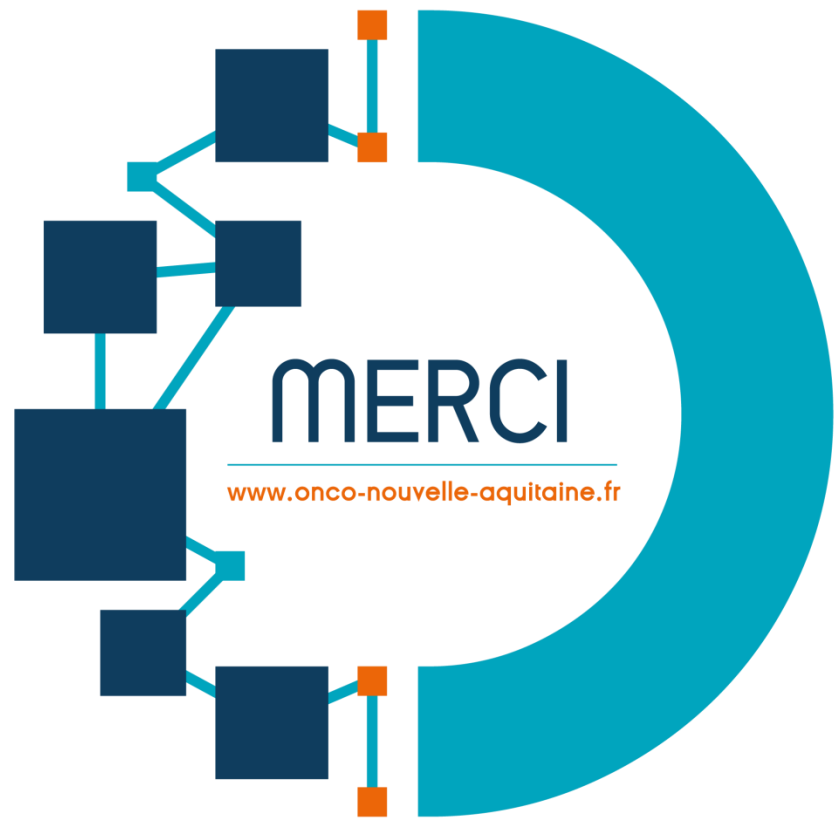
(1st line Pembrolizumab in metastatic cervical cancer)

Δ OS +7.9 months

OReO-ENGOT-Ov38

(Olaparib retreatment in late recurrent ovarian cancer)

Δ PFS +1.5-2.5 months



MERCI

www.onco-nouvelle-aquitaine.fr